

# GUIDED PATHWAYS

CLP | Career  
Ladders  
Project

## STUDENT CENTERED DESIGN FOR EQUITY IN COMPLETION

**Dr Gregory Anderson**

Vice President of Instruction, Canada College

**Dr Mina Dadgar**

Director of Research, Career Ladders Project



# OUTLINE FOR TODAY

- I. CLP's work with SMCCCD
- II. Walking in students' shoes
- III. Approaches from other colleges
- IV. Next steps for inquiry, engagement, & input



# CAREER LADDERS PROJECT SUPPORTS SMCCCD 2016-2019

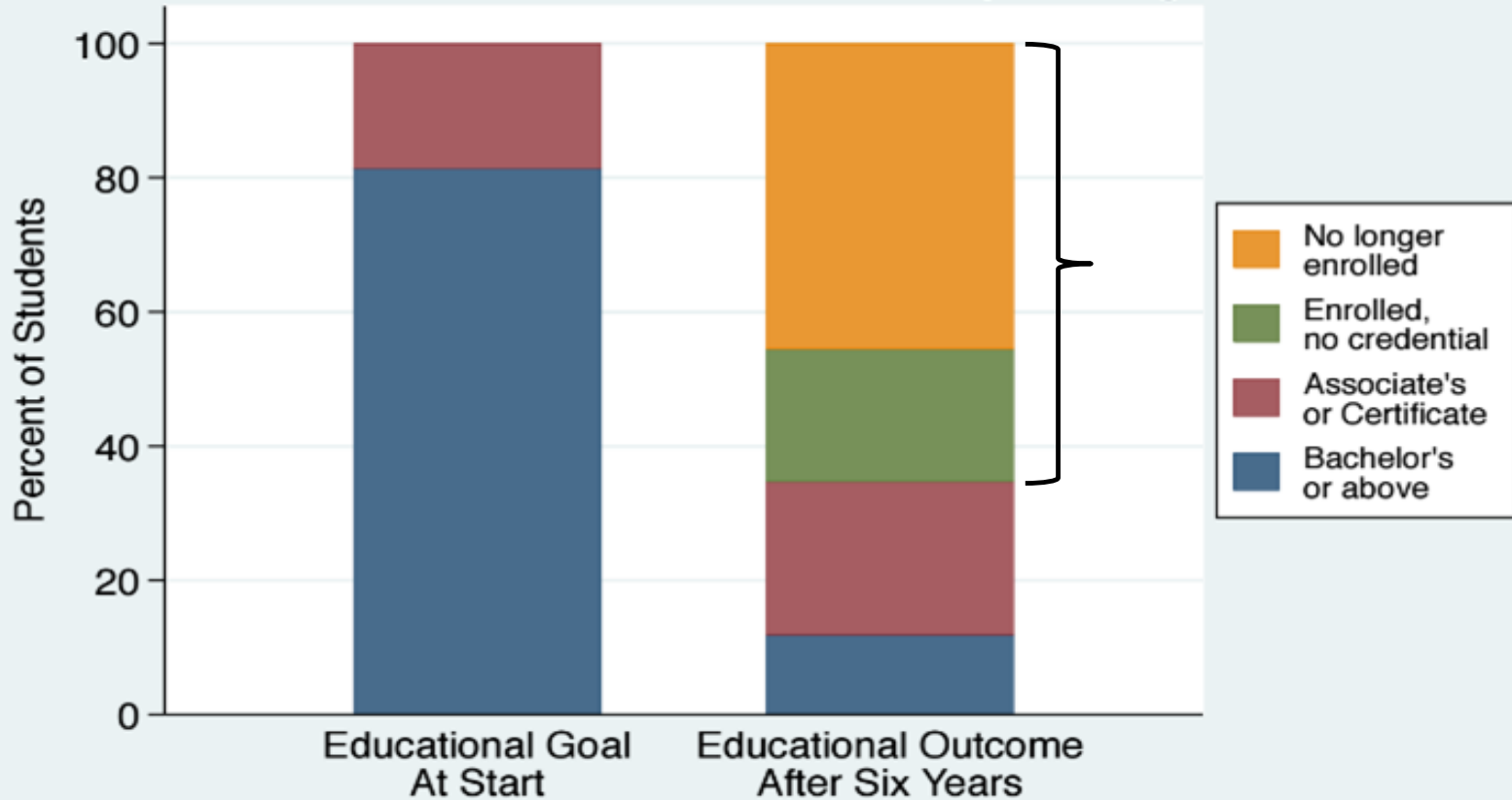
- Multiple Measures
- Dual Enrollment
- Guided Pathways



# WHY GUIDED PATHWAYS?

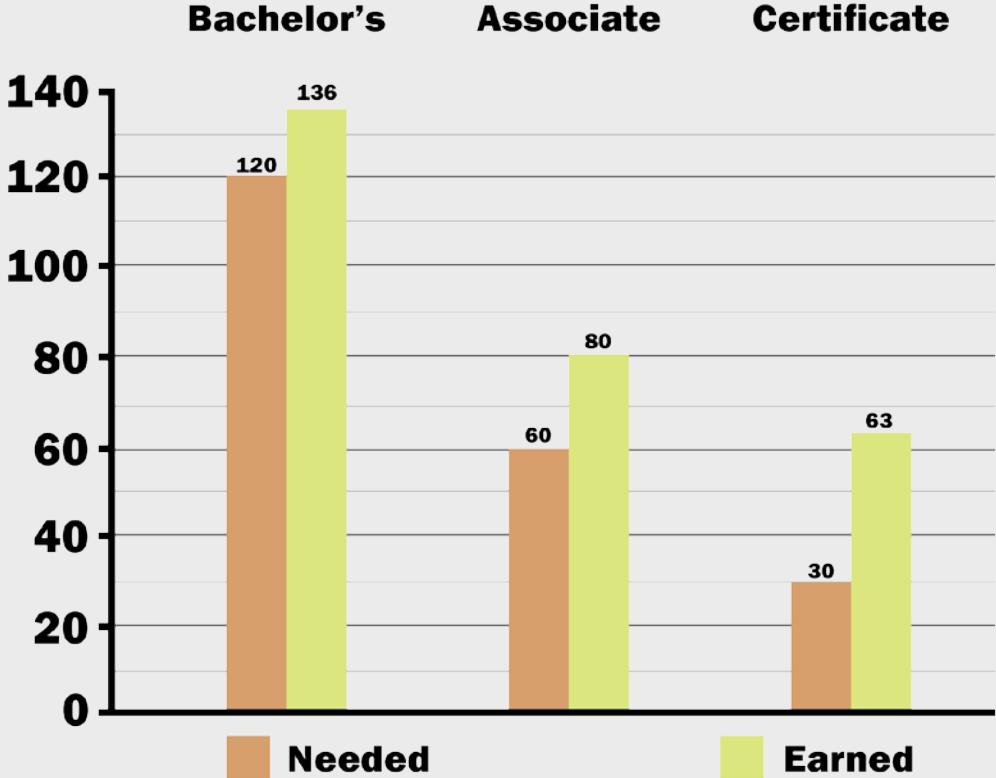


# Educational Goals and Six-year Attainment, Students who Started at a Community College, Fall 2003

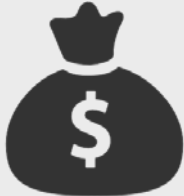


Source: U.S Department of Education, National Center for Education Statistics, 2003 Beginning Postsecondary Students Longitudinal Study, Second Follow-up (BPS:04/09)

# EXCESS CREDITS NATIONALLY



**\$7.7 billion  
in tuition**



Guided Pathway to Success: Boosting College Completion  
Complete College America  
[http://completecollege.org/docs/GPS\\_Summary\\_FINAL.pdf](http://completecollege.org/docs/GPS_Summary_FINAL.pdf)

# SURPRISING COURSE DATA

>**50%** Concerned about making a mistake when choosing classes (Moore & Shulock, 2014)

Many surprised to find that courses taken **do not count** towards credentials (Nodine et al 2012)

# FROM THE STUDENTS' PERSPECTIVE



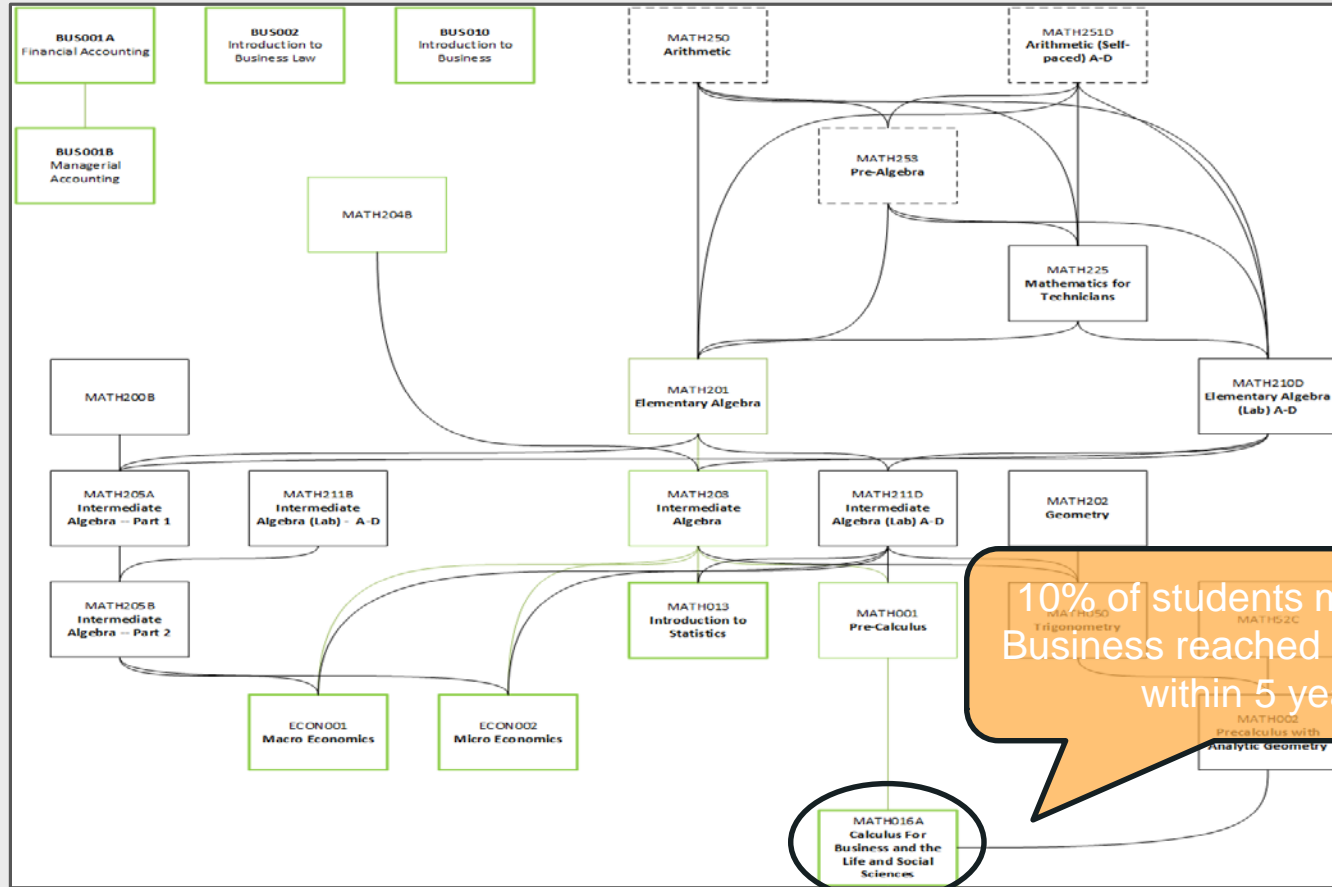


# 2-YEAR COURSE SEQUENCE BEGINNING IN THE FALL SEMESTER

You can use the following pattern to complete an Associate in Science Degree for Transfer in Business Administration. This is only one possible pattern. If you wish to earn an associate degree, you must participate in the Student Success Program (Matriculation), which includes assessing academic skills and developing a Student Education Plan (SEP) with a counselor. This plan will map your sequence of courses to help you complete your degree regardless of the semester you begin classes.

<b>1st Semester/Fall</b>		<b>Units</b>
BUS 010	Introduction to Business	3
MATH 016A	Calculus for Business and the Life and Social Sciences	3
General Education and Elective Courses		9
<b>2nd Semester/Spring</b>		<b>Units</b>
BUS 002	Introduction to Business Law	3
ECON 001	Principles of Economics (Macro-Economics)	3
General Education and Elective Courses		9
<b>3rd Semester/Fall</b>		<b>Units</b>
BUS 001A	Financial Accounting	4
ECON 002	Principles of Economics (Micro-Economics)	3
General Education and Elective Courses		8
<b>4th Semester/Spring</b>		<b>Units</b>
BUS 001B	Managerial Accounting	4
MATH 013	Introduction to Statistics	4
General Education and Elective Courses		7

# COURSE SEQUENCE FOR AA IN BUSINESS - CALIFORNIA CC





# REFLECT & SHARE

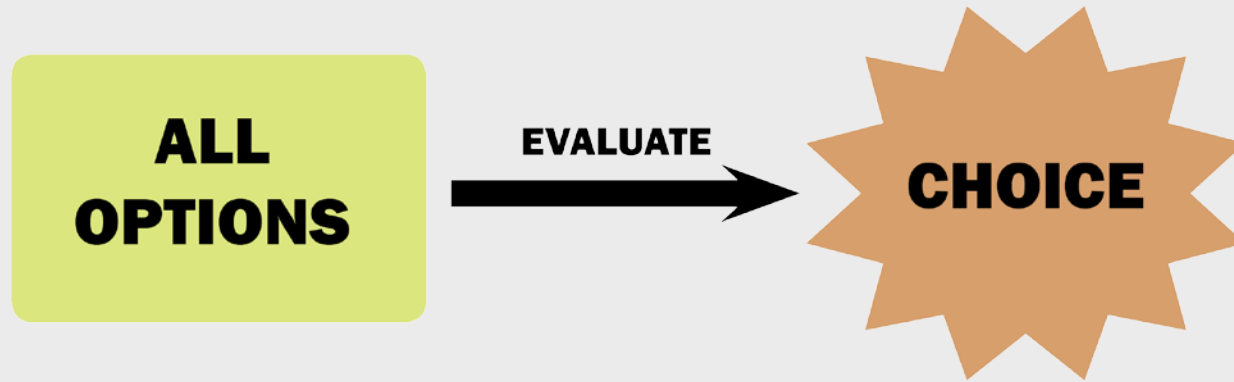
What have you found to be helpful to students when they explore their interests or choose a class?



# GUIDED EXPLORATION FOR UNDECIDED STUDENTS



# DECISION MAKING



Rachel Baker (2016)

# MULTI-STAGE DECISION MAKING



Rachel Baker (2016)

# CAREER + ACADEMIC COMMUNITIES

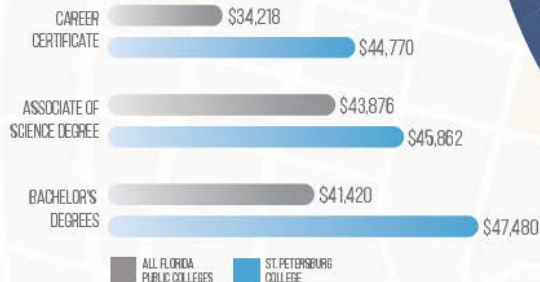
at St. Petersburg College

**Start your journey today!** Choose from one of the ten career and academic communities to see what opportunities await after you graduate. Take the first step now by going to [spcollege.edu](http://spcollege.edu)

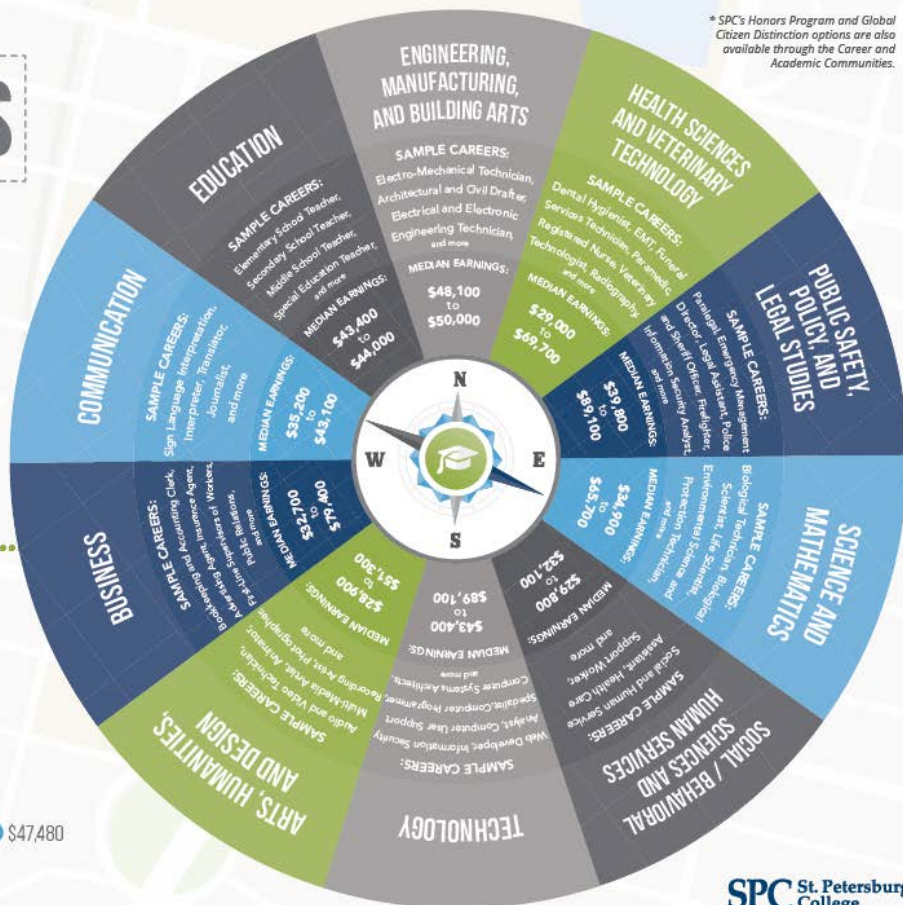
## CHART YOUR PATH BUILD YOUR FUTURE

### MEDIAN FIRST-YEAR EARNINGS

(AFTER GRADUATION)



\*SPC's Honors Program and Global Citizen Distinction options are also available through the Career and Academic Communities.



**SPC** St. Petersburg College

# QUEENSBOROUGH COLLEGE

**QUEENSBOROUGH COMMUNITY COLLEGE** **CUNY**

Login | Directory | Register | Ask e311 | A - Z Index | Public Safety

Google Custom Search

About Us | Academics | Student Life | Admissions | Faculty & Staff | Alumni & Friends | Give to QCC | Employment

## Academics

- Programs of Study
- Academic Departments
- Academic Calendar
- College Catalog
- Past Catalogs

- Office of Academic Affairs
- Accelerated Study in Associate Programs (ASAP)
- Continuing Education and Workforce Development
- Library

- Student Resources
- OneCard ID
- Class Schedule
- Tuition & Fees
- Financial Aid
- Scholarships
- Transcripts
- Academic Standing
- Academic Success
- Student eMail
- Bursar: Pay Your Bill
- Registrar
- Pre-College Programs



Welcome to Academics Central. Here you will find information about the Queensborough Academies, Programs of Study, and resources you may need to be successful at Queensborough Community College.

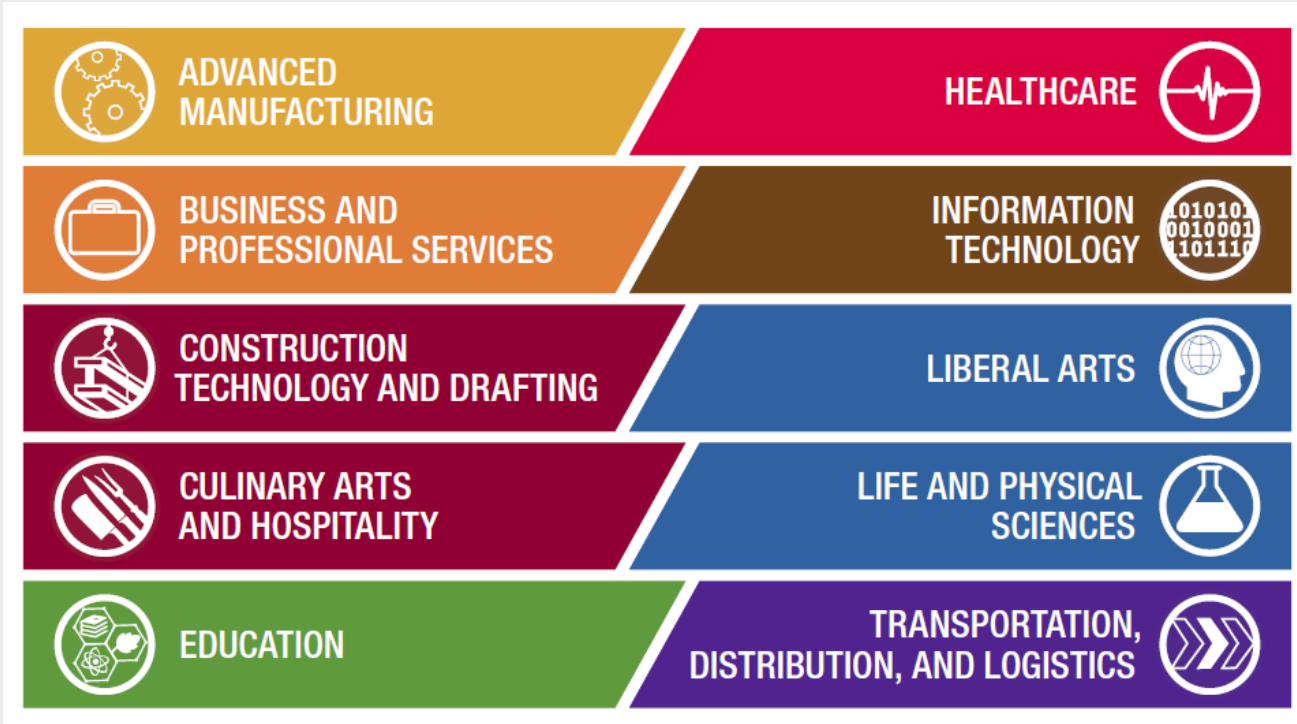
## QUEENSBOROUGH Academies

<b>What is an Academy?</b> 	<b>Business</b>	<b>Health Related Sciences</b>
<b>Liberal Arts</b>	<b>Science, Technologies, Engineering, &amp; Mathematics (STEM)</b>	<b>Visual And Performing Arts (VAPA)</b>

**Programs of Study** | **General Education (Pathways)**



# CITY COLLEGES OF CHICAGO, IL



# BAKERSFIELD COLLEGE ROAD MAP





# HELP UNDECIDED STUDENTS EXPLORE CAREER OPTIONS & CHOOSE A PROGRAM

- Cluster programs of study into a handful of manageable buckets (meta majors)
- Common Gateway (foundation) courses give students a taste of the competencies within the meta major
- Guide students towards choosing a program (counseling & career exploration in each meta major)



# **GATEWAY COURSES & CAREER EXPLORATION SUPPORT**





**Design Tech meta major has a GATEWAY course  
Introduces students to competencies and helps students choose one  
of the following programs**

Media arts, graphic design, industrial design, interior design, engineering, and design technology

- Embedded project based course
- Embedded Dual Enrollment in Design tech

“In their first year of college, students should be introduced to all the competencies they need to develop to successfully reach their goals”

*Salomon Davila, Former Design Faculty*



Community College

- Students take a first year seminar in a meta major taught by discipline faculty
- Students research different careers in the area to help them choose a program
- A taste of different programs in that area and needed competencies
- Make connections with peers and peer tutors in that area





## Lessons Learned:

- Cross Functional Mapping Sequence Teams
- Start with the End in Mind

MCC faculty and staff created “mapping sequence teams,” cross-functional teams of instructional faculty and counseling faculty to clarify course sequence for each program.

Work begins with competencies, teams work together to determine which GE, content courses meet the competencies for meta majors and what needs to be developed



# REFLECT & SHARE

Which ideas sound interesting/exciting?

What concerns/questions do you have?

