



SAN MATEO COUNTY  
**COMMUNITY**  
COLLEGE DISTRICT

FACILITIES PLANNING,  
MAINTENANCE & OPERATIONS

# Capital Improvement Program Districtwide Student Housing @ CSM

---

APRIL 3, 2024

PLANNING & BUDGETING  
COUNCIL



# Districtwide Student Housing @ CSM

**Total Budget**                **\$86M**

- State:                        \$56M
- District:                    \$30M

## Project Scope

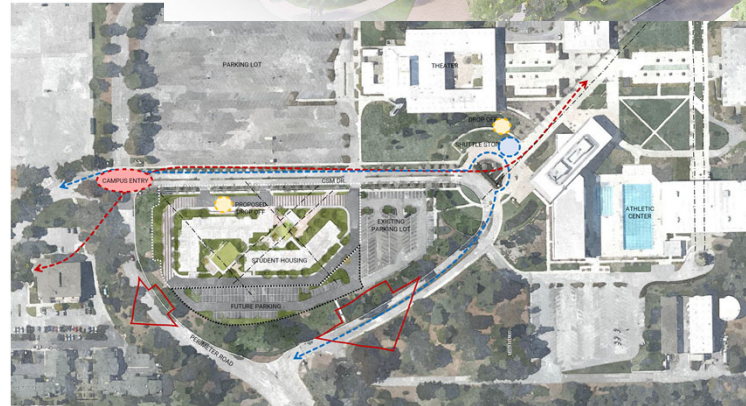
- Approx. 86K GSF, 3-stories, Lot B
- 310 - 314 student beds (incl mobility units)
- Projected rents: \$475 - \$920 / month  
*(Proposed Max. Monthly 2022 Low-Income Rent per Student = \$920, will be adjusted when the bldg opens)*
- Resident Director's Apartment (2bd)

## Schedule

- Design/DSA/Bidding                        May 2023 – Jul 2025
- Construction                                    Aug 2025 - May 2027
- Move-in    Jun 2027

## Status

- Design Development Phase
- Continue to review budget/value engineer
- DSA - A/E Intro & Pre Submittal Mtg
  - California Geological Survey (CGS) Submittal in progress
- California Environmental Quality Act (CEQA) in progress (4-6 months)

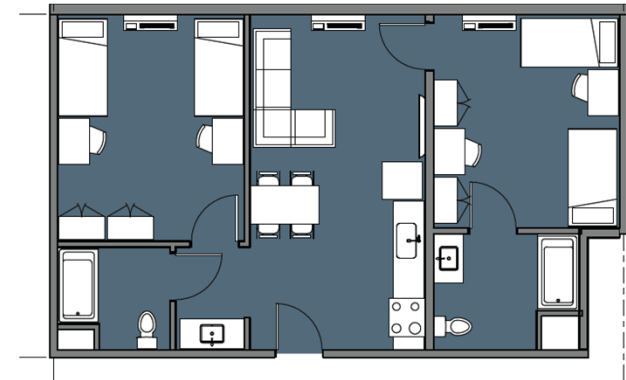


# Districtwide Student Housing @ CSM

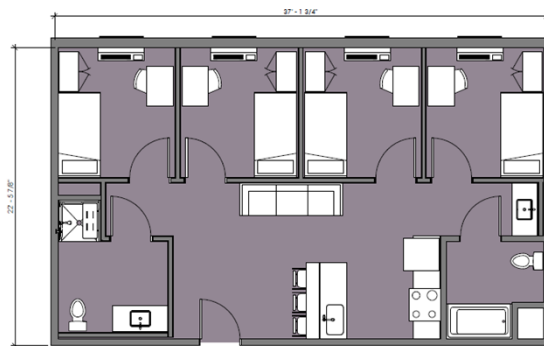


SEMI - 2BR/1BA 552sf **\$475**

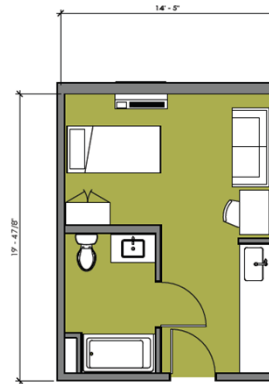
UNIT MIX	
<b>SEMI-SUITES</b>	
14 - 2BD/1BA (DBL)	= 168 BEDS
<b>APARTMENTS</b>	
10 - STUDIO	= 10 BEDS
02 - 2BD/2BA (DBL) <i>END UNIT</i>	= 16 BEDS
12 - 2BD/2BA (DBL)	= 48 BEDS
18 - 4 BD/2BA (SINGLE)	= 72 BEDS
<b>TOTAL RENTABLE BEDS</b>	<b>= 314 BEDS</b>
01 - 2 BD/2B (RD)	= 02 BEDS
<b>TOTAL BEDS</b>	<b>= 316 BEDS</b>



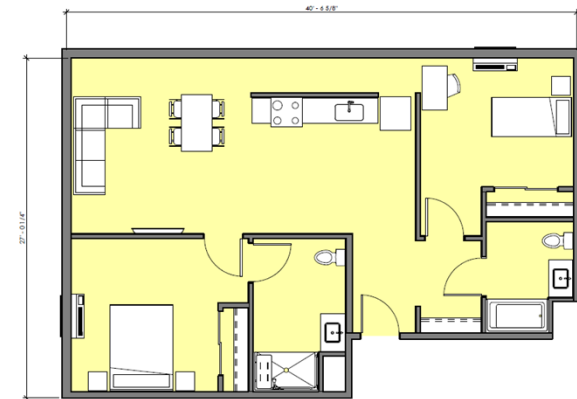
APT - 2BR/2BA 767sf **\$700**



APT - 4BR/2BA 800sf **\$775**

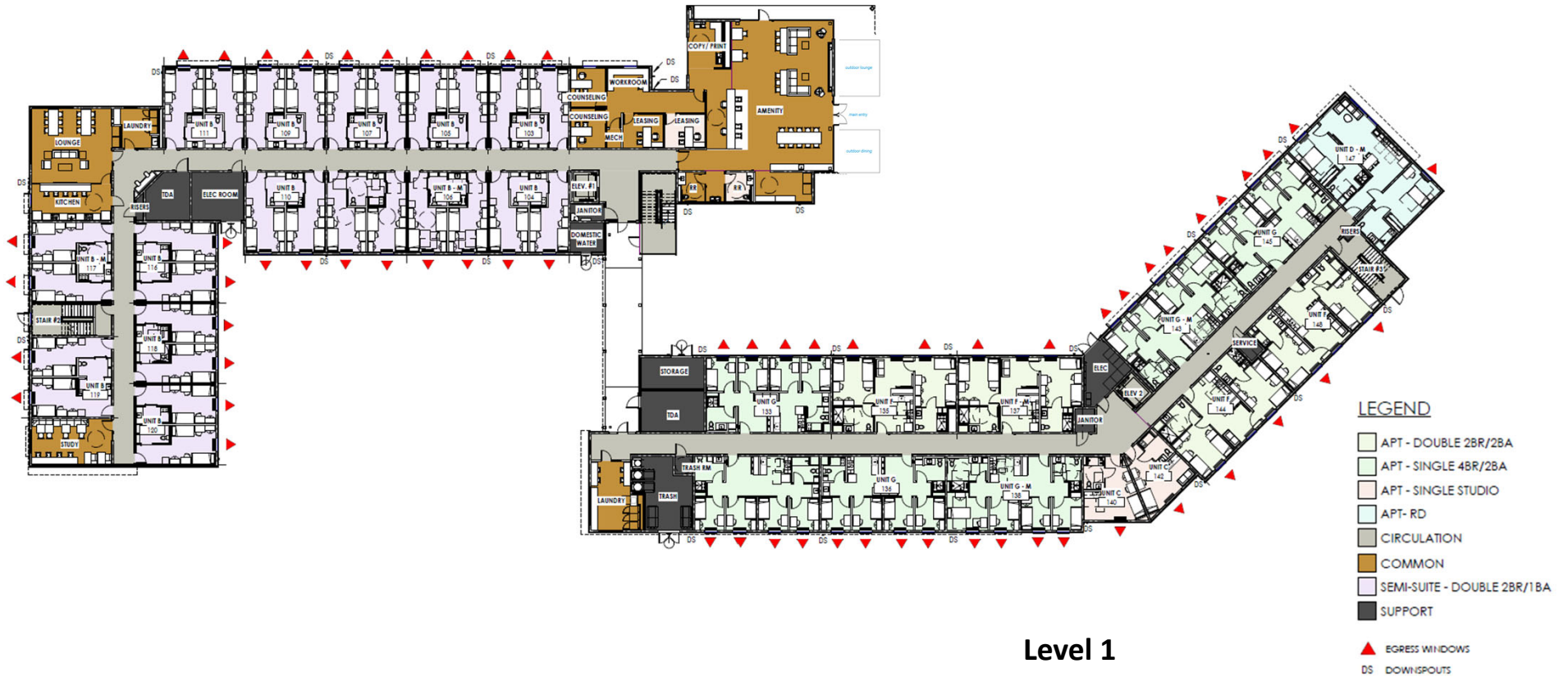


APT - STUDIO 260sf **\$920**



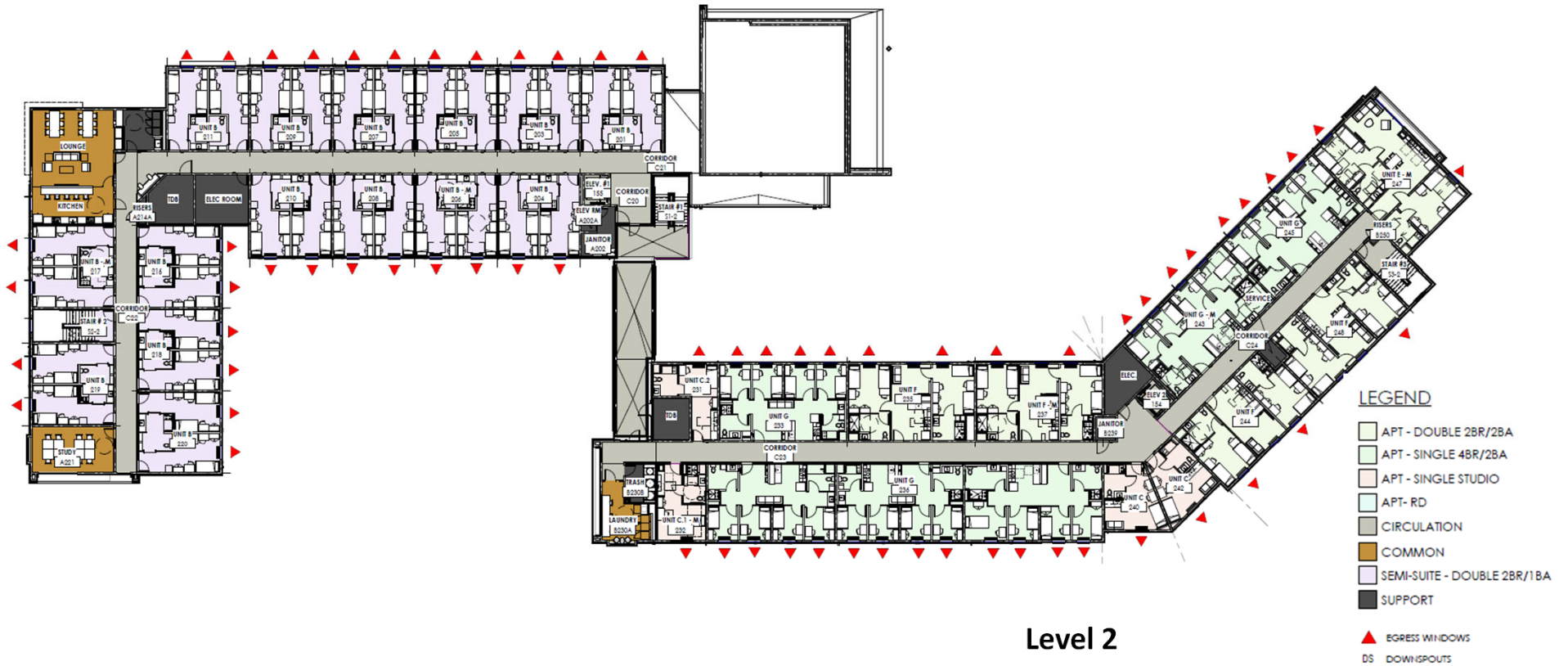
APT - RD 945sf **Resident Director - \$0**

# Districtwide Student Housing @ CSM





# Districtwide Student Housing @ CSM

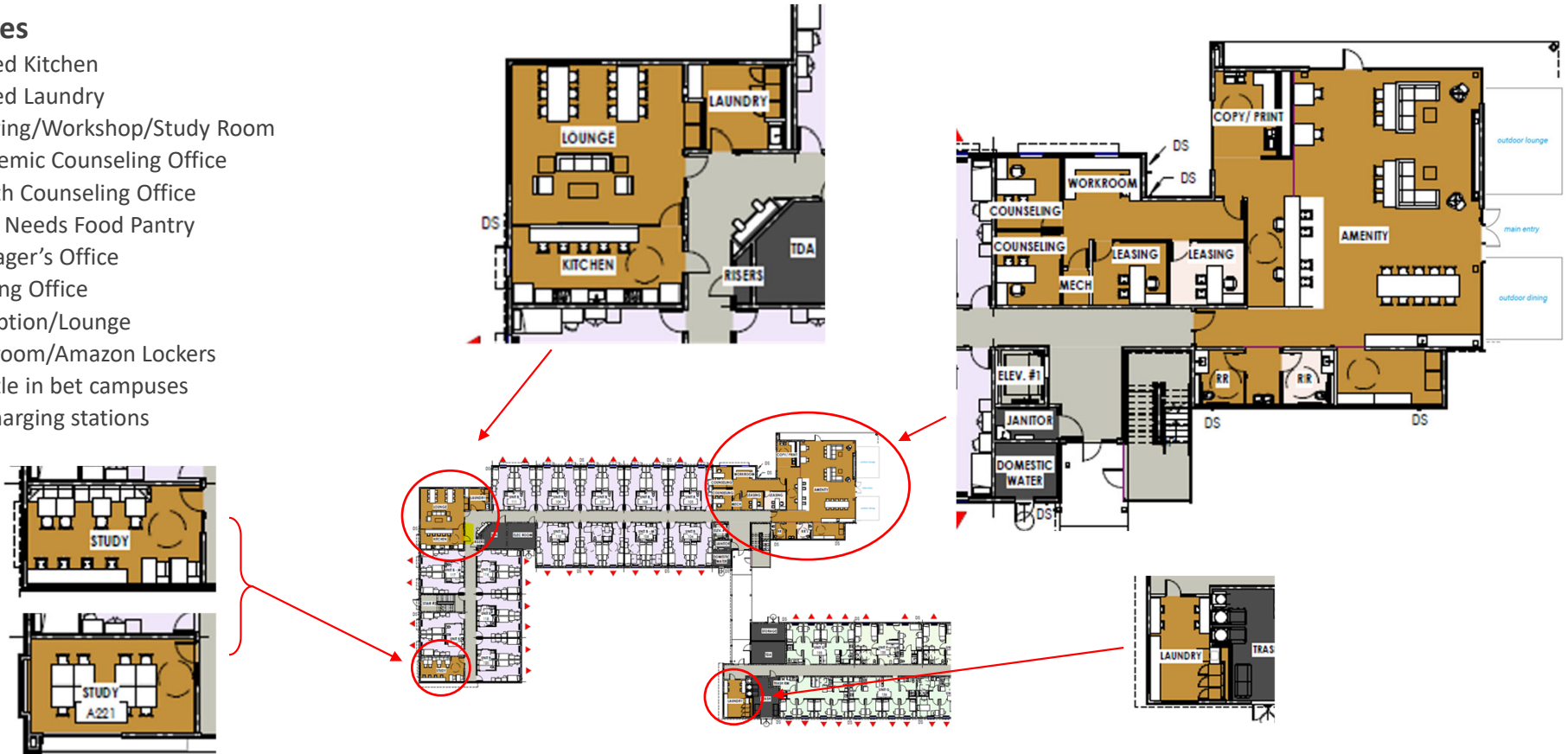




# Districtwide Student Housing @ CSM

## Amenities

- Shared Kitchen
- Shared Laundry
- Tutoring/Workshop/Study Room
- Academic Counseling Office
- Health Counseling Office
- Basic Needs Food Pantry
- Manager's Office
- Leasing Office
- Reception/Lounge
- Mailroom/Amazon Lockers
- Shuttle in bet campuses
- EV charging stations



# Roadshow

---

## CAN

Planning and Budget Council (PBC):	4/3/24
Associated Student - ASCC:	TBD

## CSM

Institutional Planning Committee (IPC):	2/7/24
Associated Student - ASCSM:	2/26/24

## SKY

Strategic Planning and Allocation of Resource Comm. (SPARC):	4/11/24
Associated Student – ASSC:	3/12/24

## Chancellor's Office

Council (monthly update)	3/26/24
Cabinet	4/2/24

*Next Step..... Hire a consultant to start planning operations and start a Districtwide Task Force*

### Resources:

SB 169 Higher Education Student Housing Grant Program Bill Language -

[https://leginfo.legislature.ca.gov/faces/billTextClient.xhtml?bill\\_id=202120220SB169](https://leginfo.legislature.ca.gov/faces/billTextClient.xhtml?bill_id=202120220SB169)

SMCCCD Facilities Planning Website: <https://www.smccd.edu/facilities/projects/dw/dwstudenthousing.php>



# Thank you!

---

dank u  
ju faleminderit  
Tack  
Asante 谢谢 Tak mulțumesc  
kiitos  
**Salamat!** Gracias  
Terima kasih Aliquam  
Merci Dankie Obrigado  
ありがとう köszönöm grazie  
Aliquam Go raibh maith agat  
děkui Thank you

gem