

Course Scheduling

Course Scheduling Related Process and Enrollment Outcomes

Office of Instruction

to

PBC

April 5, 2023



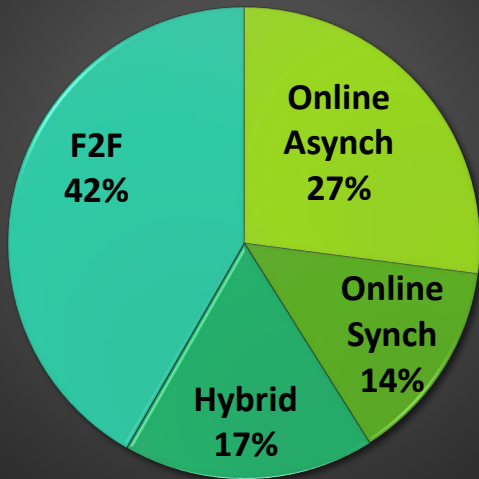
Instructional Planning Council Annual Goals

In consultation with the Academic Senate and the Office of Instruction, IPC serves in an advisory role specific to the following EMP Objectives:

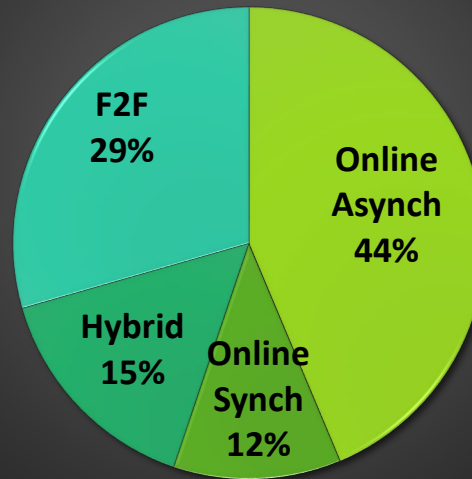
- 1.3 Create a student-first course schedule
- 1.16 Create campus culture that supports completion within 3 years
- 1.19 Reduce or eliminate the cost of textbooks
- 1.8 Ensure academic program viability
- 2.3 Increase resources for faculty professional development
- 2.5 Increase use of Open Educational Resources
- 4.10 Ensure faculty, staff and students have access to technology to support multiple modalities
- 4.11 Provide trainings needed to ensure new technology facilitates quality teaching and learning
- 4.12 Offer key courses in multiple modalities

Spring 2023 Section, Enrollment, and Fill Rate by Modality

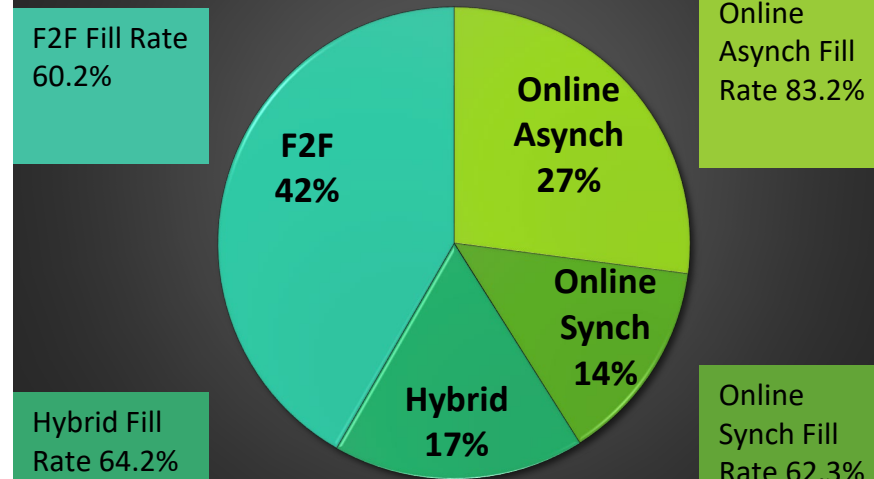
Spring 2023 Section by Modality



Spring 2023 Enrollment by Modality



Spring 2023 Section by Fill Rate by Modality



Total sections = 628; College Enrollment = 10,591; College Fill Rate = 68.3% (Census Day 2.7.2023)

Spring 2023 Section Changes

- A total of 628 sections; a total of 443 unduplicated sections.
- Office of Instruction received 344 course change forms from a total of 150 unique sections.
- Change forms including
 - Section cancellation
 - Staffing change
 - Room, day of the week, and/or time change
 - Modality change
 - Cancel and add new/additional classes

Are We Flexible and Stable?

Spring 2023 Course Sections (N=443)

- Day, Time, or Room
- Staffing
- Cancellation
- Modality
- Cancel one and add another

of Sections
Changed
34%

of Sections
Unchanged
66%

443 Total Sections (undup.)
293 Sections Unchanged
150 Sections Changed

Take Away

- **Collaborative process** of course scheduling between faculty and deans
- **Managing the complexity** of personnel, programs, and students' needs of course scheduling

Enrollment Metrics and Results

Enrollment Metrics Goals:

- Enrollment
- FTES
- FTEF
- Fill Rate (Actual Enroll/Max Enroll)
- Productivity Ratio (FTES/FTEF)

Each division's enrollment trends

Spring 2023 Enrollment Metrics Goals and Results

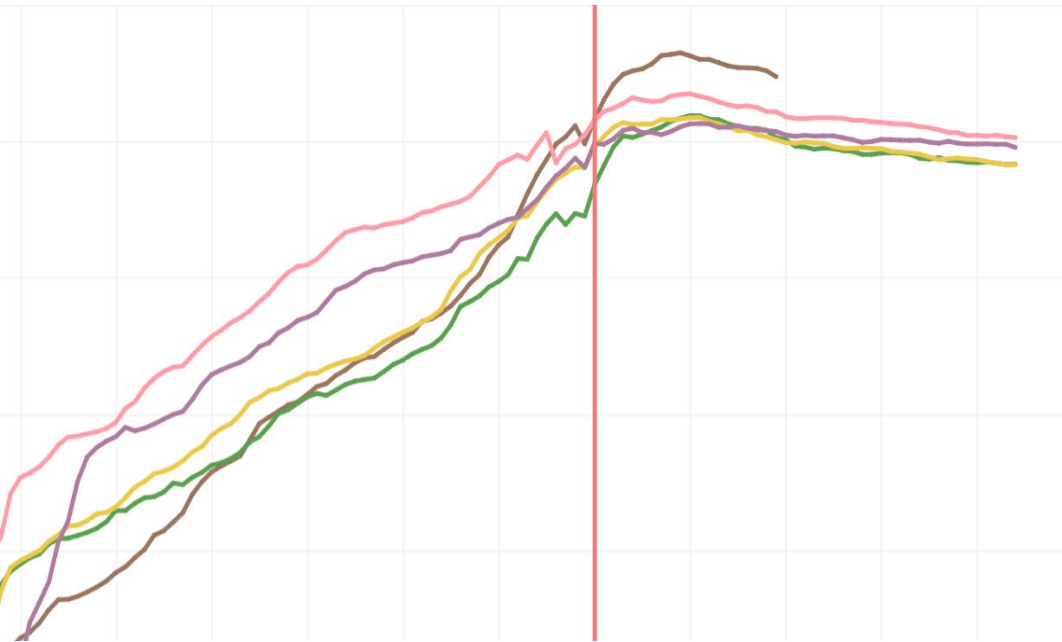
Enrollment Metrics Goals

Division FTE Goal	Enrollment	Fill Rate	FTES	FTEF	FTES/ FTEF
Academic Sup & Learn		70%	3.2	0.2	13.3
Bus. Design & Workforce		70%	320.7	23.5	13.7
Counseling		70%	16.9	1.2	13.7
Humanities & Soc. Sci.		70%	414.4	30.3	13.7
Kinesiology, Athl & Dan		70%	90.5	6.6	13.7
Science & Technology		70%	425.4	31.1	13.7
College Goal	11,000	70%	1271.0	93.0	13.7


Enrollment Metrics Results as of Census Day

	Undup. Sections	Sections	Enrollment	Fill Rate	FTES	FTEF	FTES/ FTEF
Academic Sup & Learn							
Bus. Design & Workforce							
Counseling							
Humanities & Soc. Sci.							
Kinesiology, Athl & Dan							
Science & Technology							
Total							

1. Which division offered the most sections?
2. Which division had the most enrollment?
3. Which division had the highest fill rate (actual enroll/max enroll)?
4. Which division has the highest FTES?
5. Which division has the best productivity ratio (FTES/FTEF)?
6. Which divisions met our enrollment metrics goals?



Term
(Multiple values) ▼

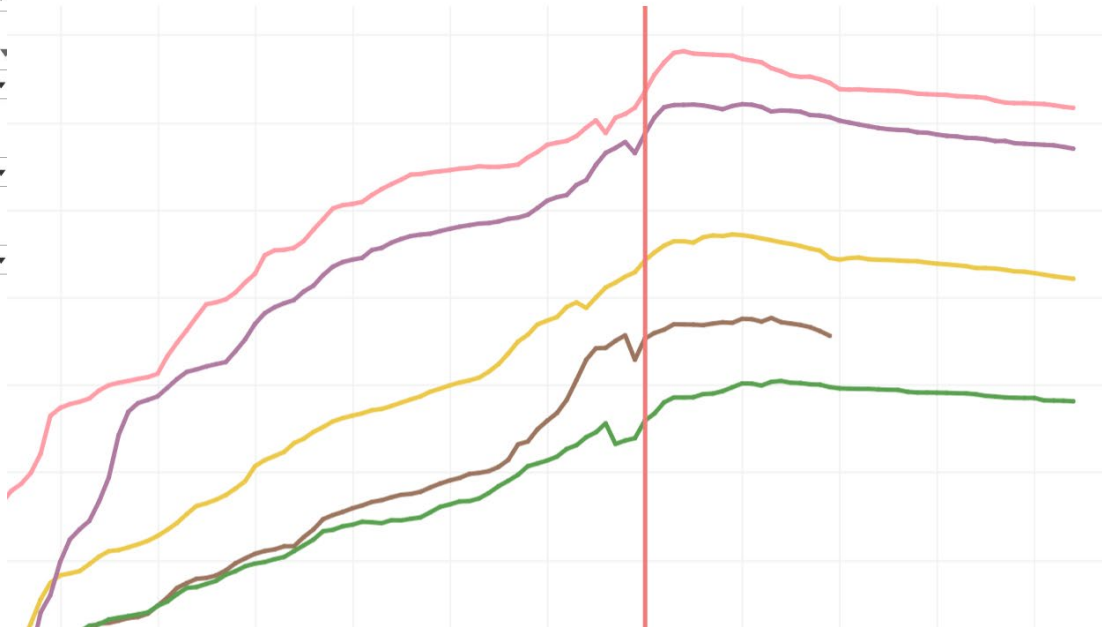
Division 
Bus. Design & Workforce ▼

Department
(All) ▼

Course Name
(All) ▼

Course length
 (All)
 Short Term
 Standard Length

Term
■ Spring 2019
■ Spring 2020
■ Spring 2021
■ Spring 2022
■ Spring 2023



Term
(Multiple values) ▼

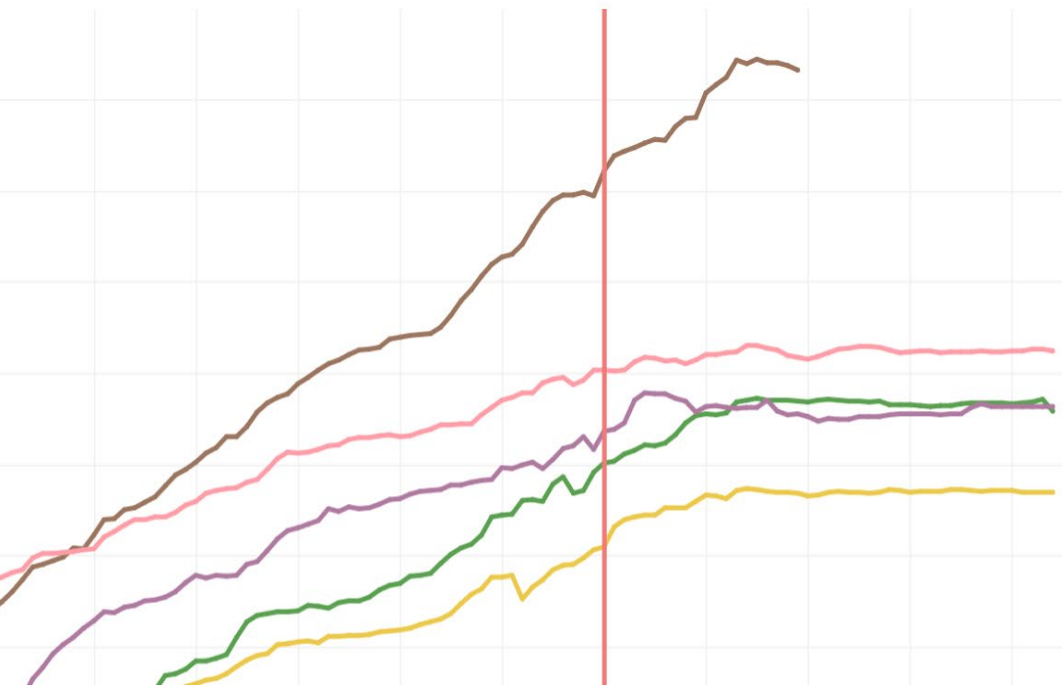
Division
Humanities & Social Sciences ▼

Department
(All) ▼

Course Name
(All) ▼

Course length
 (All)
 Short Term
 Standard Length

Term
■ Spring 2019
■ Spring 2020
■ Spring 2021
■ Spring 2022
■ Spring 2023



(Multiple values)

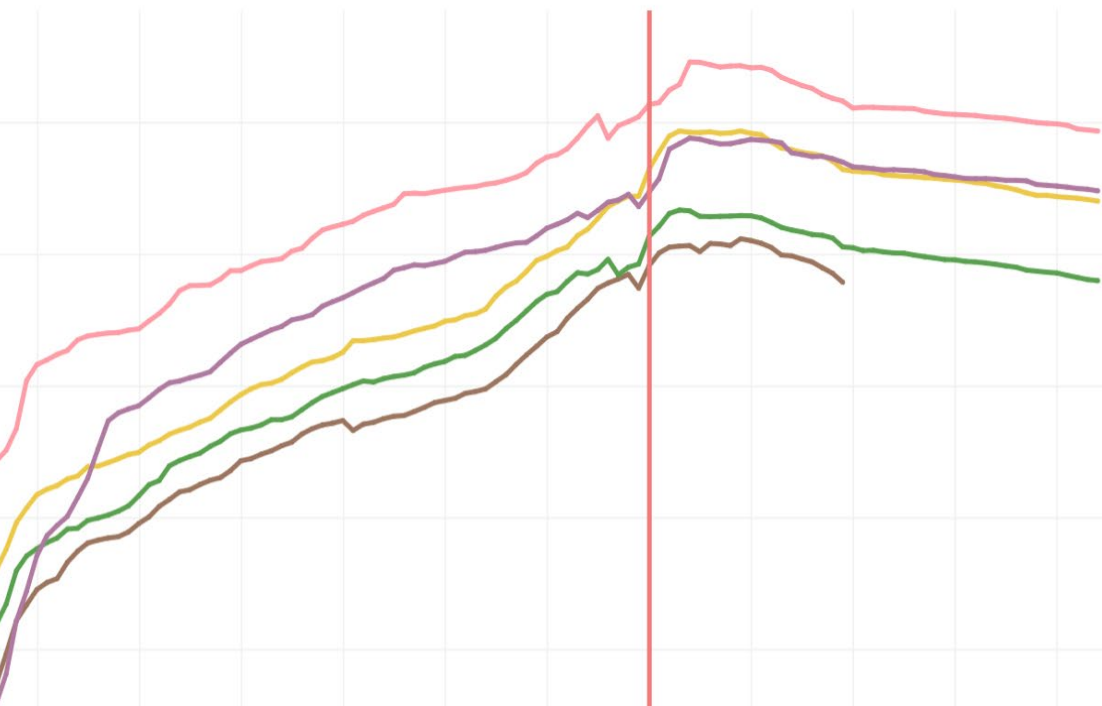
Division
Kinesiology, Ath & Recreation ▼

Department
(All) ▼

Course Name
(All) ▼

Course length
 (All)
 Short Term
 Standard Len

Term
■ Spring 2019
■ Spring 2020
■ Spring 2021
■ Spring 2022
■ Spring 2023



Term
(Multiple values) ▼

Division
Science & Technology ▼

Department
(All) ▼

Course Name
(All) ▼

Course length
 (All)
 Short Term
 Standard Length

Term
■ Spring 2019
■ Spring 2020
■ Spring 2021
■ Spring 2022
■ Spring 2023

Thank You
