



# **SAN MATEO COUNTY COMMUNITY COLLEGE DISTRICT**

**FACILITIES MASTER PLAN**

**CAÑADA COLLEGE**



**COMMUNITY FORUM**

OCTOBER 21, 2021



# AGENDA

- 01 Process + Timeline
- 02 Context Setting
- 03 Survey
- 04 Questions + Feedback

# INTRODUCTIONS



**Rob**

Project Director



**Nicole**

Planning Director



**Bene**

Campus Planner



**Jessa**

Campus Planner



**Vikas**

Sustainability Director

*Comprehensive  
Expertise*

---

Outreach

Campus  
Assessments

Space  
Utilization

Sustainability

Programming

Pedagogy +  
Technology

# PROCESS + TIMELINE

---

01

# OUR TASK



CREATE A **COHESIVE VISION** FOR THE CAMPUS  
OVER TIME



TRANSLATE THE STRATEGIC AND EDUCATIONAL  
PLANS INTO A **PHYSICAL PLAN**

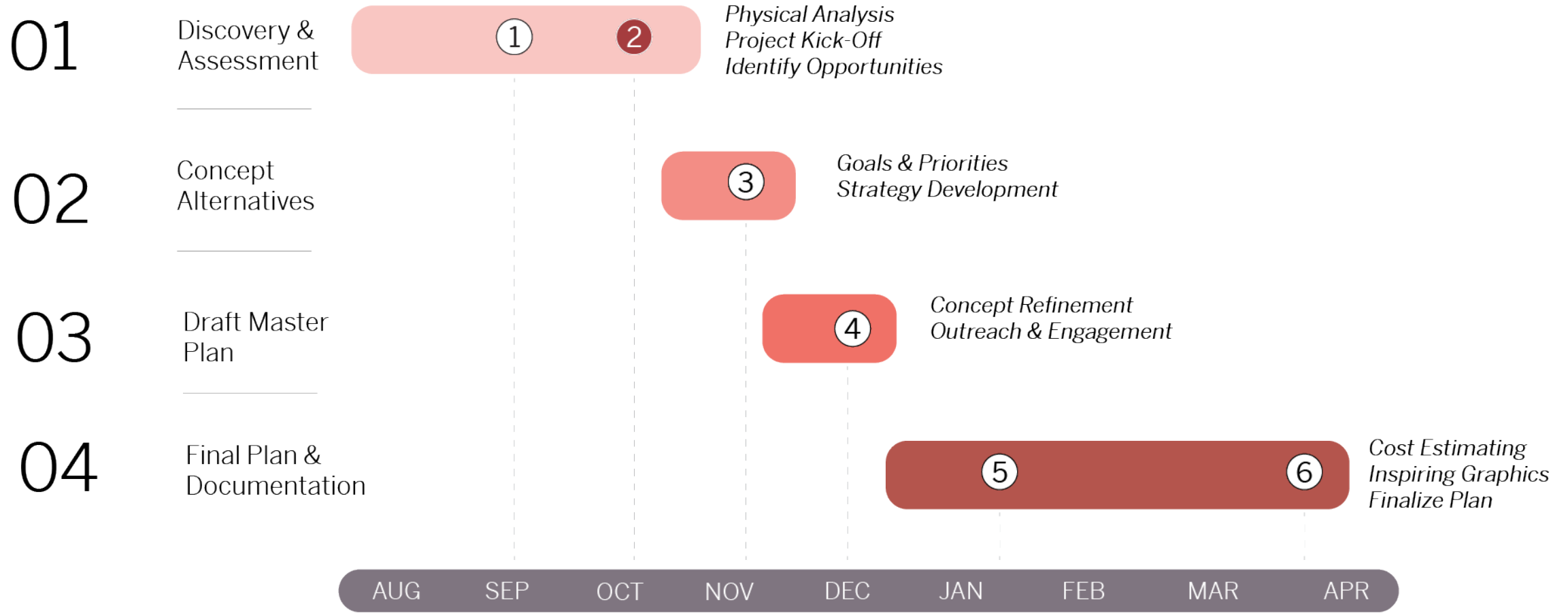


**SUPPORT** THE CAMPUS'S EVER-CHANGING NEEDS



ESTABLISH A **FRAMEWORK** FOR IMPLEMENTATION

# PLANNING PROCESS



- Core Group
- District Leadership
- Involved Groups
- Community
- Board of Trustees

# MASTER PLAN GOALS



## FACILITIES EXCELLENCE

Ensure facilities conditions are suitable for current and future need and identify and plan for any required upgrades.



## POST-PANDEMIC LEARNING

Identify campus space needs and plan for and support post-pandemic learning environments including technology and infrastructure upgrades.



## CAMPUS EXPERIENCE

Support student success through enhanced campus experience, establish places for all, and support new ways of learning, collaborating, and working.



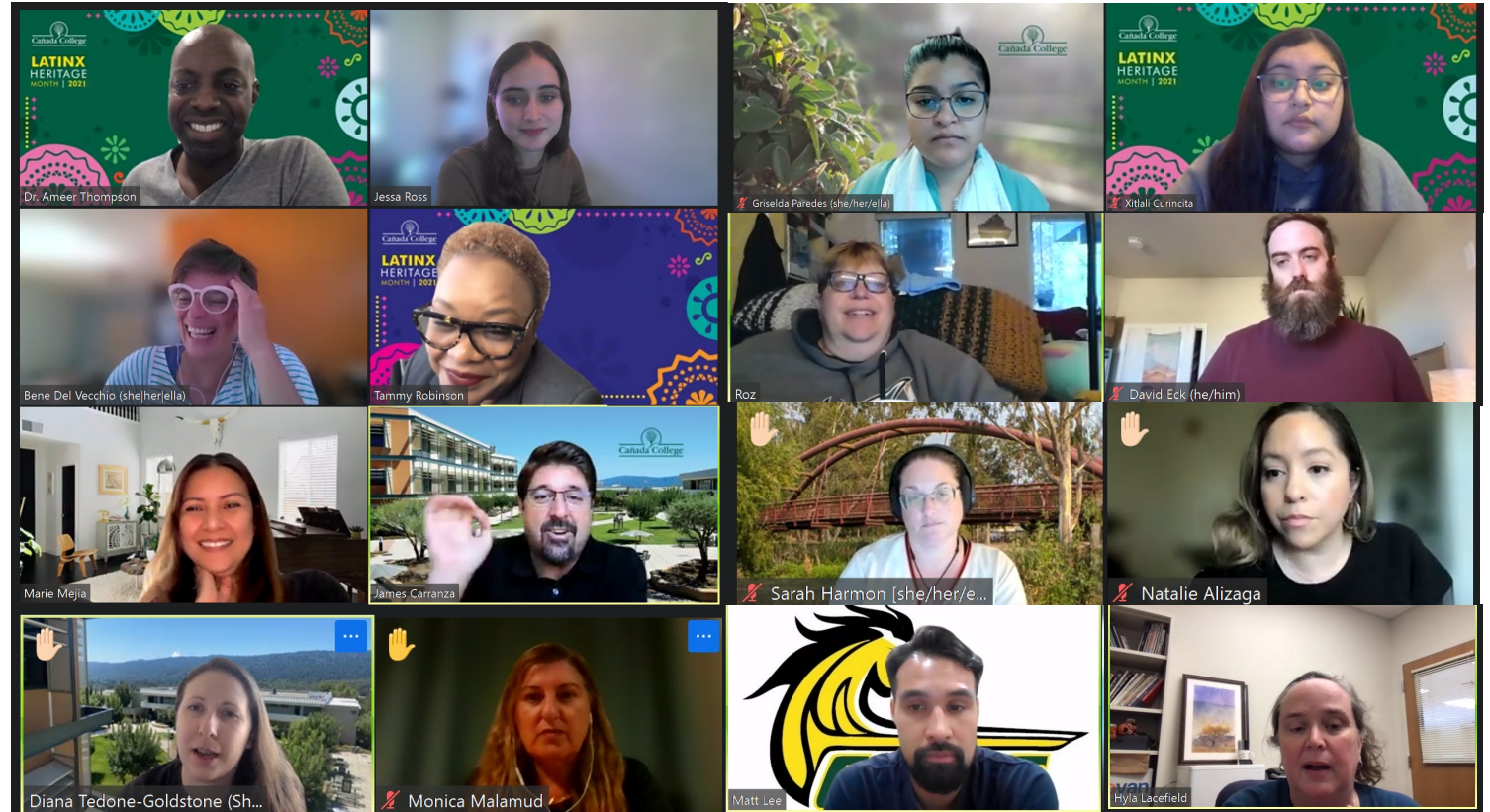
## SUSTAINABILITY

Prioritize sustainable practices in facilities use and maintenance especially in energy use and alignment to state and national net zero goals.

# CONSTITUENT OUTREACH

## Engagements to date:

- College Cabinet
- Associated Students of Cañada College
- Academic Senate
- Classified Senate
- ASLT Division
- Science & Technology Division
- Business, Design and Workforce Division
- Humanities and Social Science Division
- Kinesiology, Athletics and Dance Division
- Counseling Division
- Enrollment Services
- Planning, Research & Institutional Effectiveness (PRIE)
- Planning & Budgeting Council (PBC)
- Instructional Planning Council (IPC)
- Student Services Planning Council (SSPC)
- Equity and Antiracism Leadership Group
- Safety
- Technology & Distance Education Advisory Committees





# WHAT WE HAVE HEARD

## Technology

We must ensure that we have the technology to facilitate the shift to hybrid modes.

## Welcoming Campus

From addressing pedestrian safety to better representing the diverse student body, the campus should be a safe space for all.

## Rethinking Space

Take advantage of opportunities to reimagine physical spaces like the library, underused classrooms, and outdoor areas.

## Wayfinding

Improvements to building signage and maps are necessary to improve navigation and access to services on campus.

## Flexibility

Learning and collaboration spaces should support program growth and hybrid schedules of students, faculty and staff.

# GOALS + FEEDBACK → OBJECTIVES



- 1 Identify short- and long-term needs
- 2 Use space efficiently
- 3 Upgrade technology for hybrid learning
- 4 Create flexible spaces
- 5 Establish places to gather
- 6 Employ sustainability guidelines
- 7 Promote relationship with community

# PROCESS

Assessments + Analysis



Facilities Condition



Wayfinding



Space Utilization



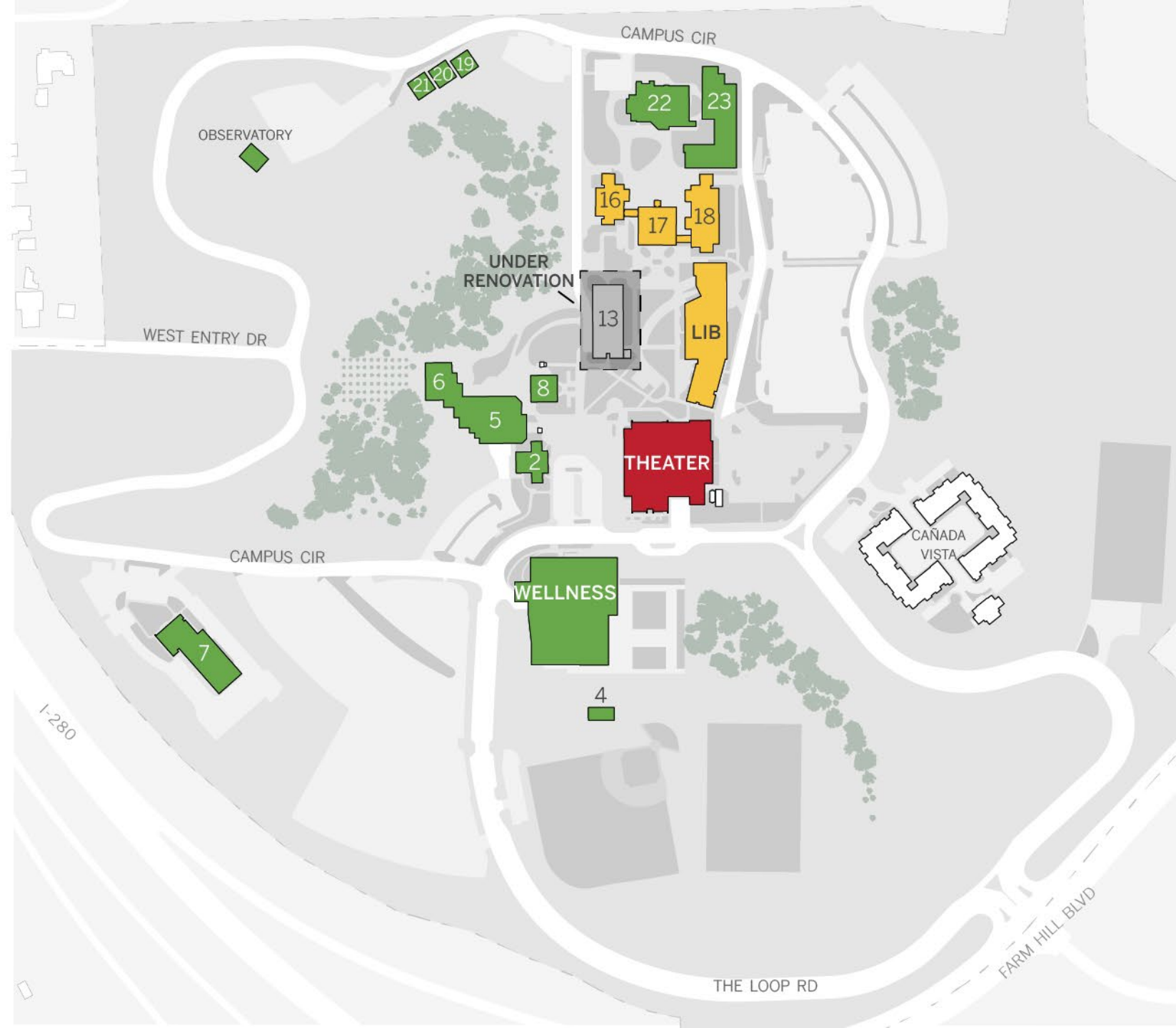
Sustainability



# FACILITIES CONDITION ASSESSMENT

The District is assessing building conditions to identify and plan for any required upgrades.

Modernizing the Theater (Building 3) is currently the top priority project for the campus.





# SPACE UTILIZATION ANALYSIS

Learning will look different post-pandemic. Analyzing building utilization before, during, and after the pandemic leads to recommendations for efficient facilities use and hybrid delivery of education.






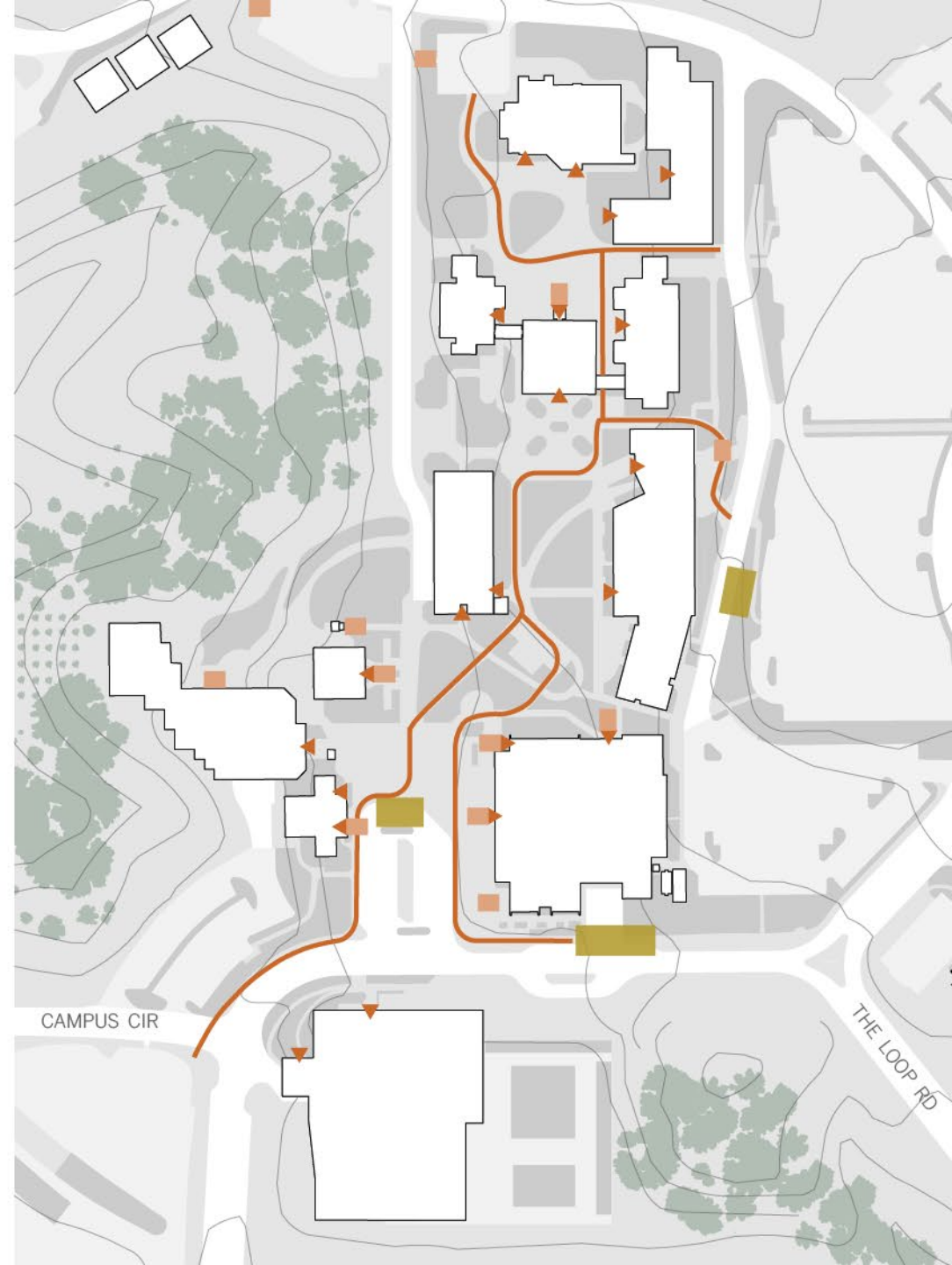


# WAYFINDING ASSESSMENT

Wayfinding and signage analysis ensures that the campus is easily navigable and accessible to all and that the College expresses a cohesive identity.

CAMPUS CORE

-  Drop Off
-  Primary Route
-  Building Entrance
-  Stairs





# SUSTAINABILITY ANALYSIS

Sustainability is a top priority for the District. The Facilities Master Plan will provide guidelines for best practices in energy and sustainability.



Image Source: Cañada Sustainability Plan (2018)

# CONTEXT SETTING

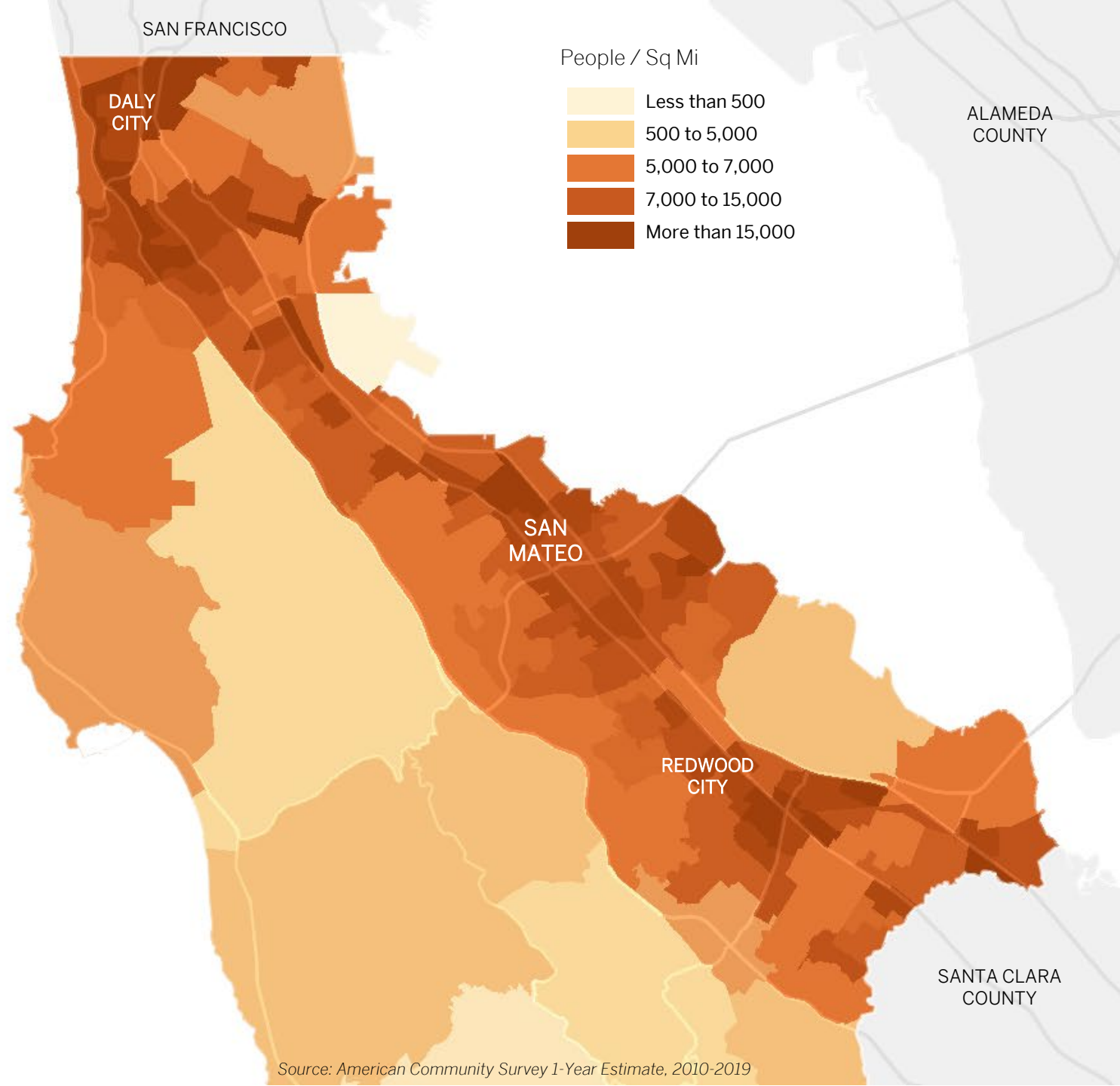
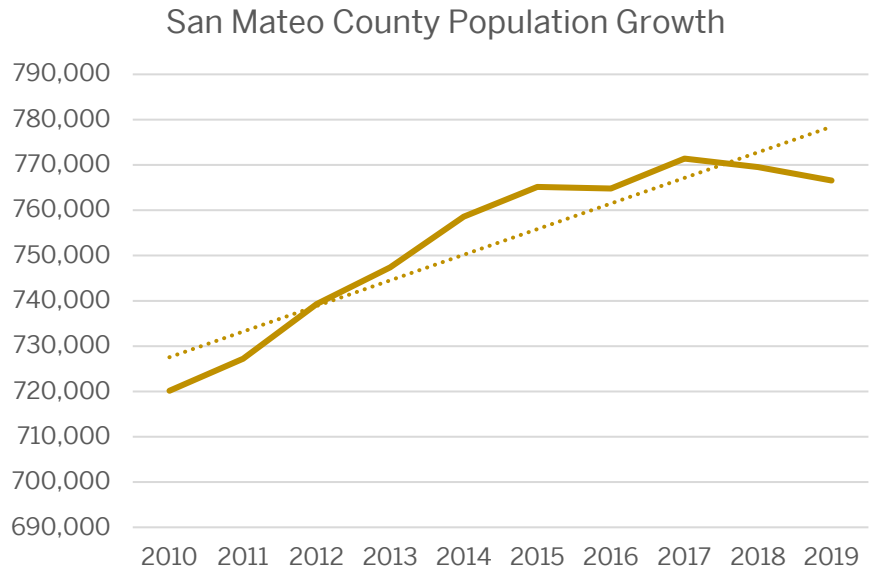
---

02



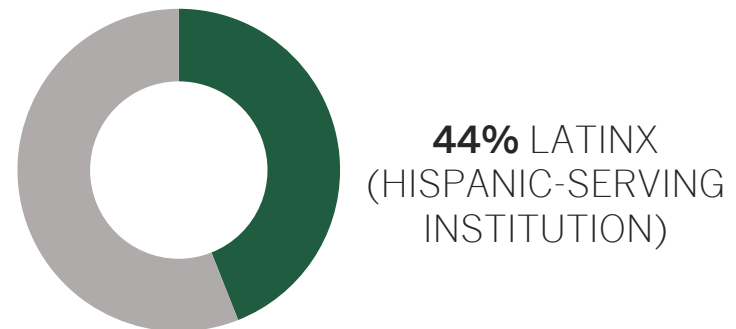
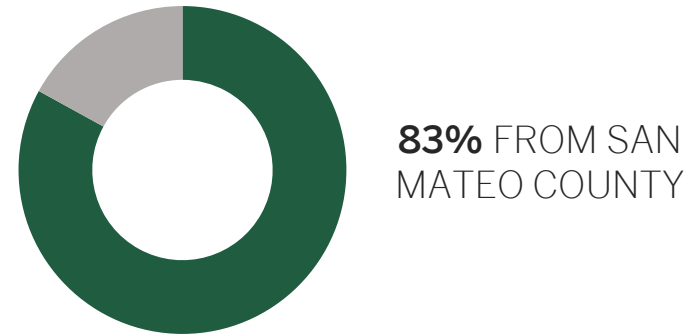
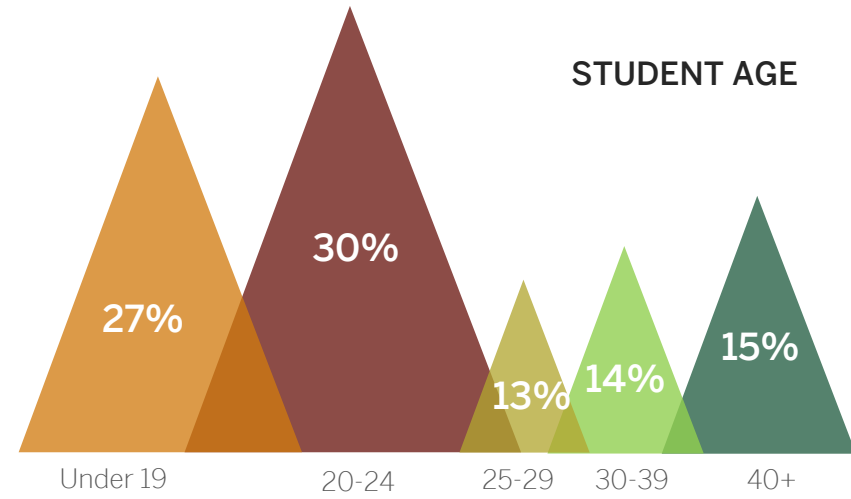
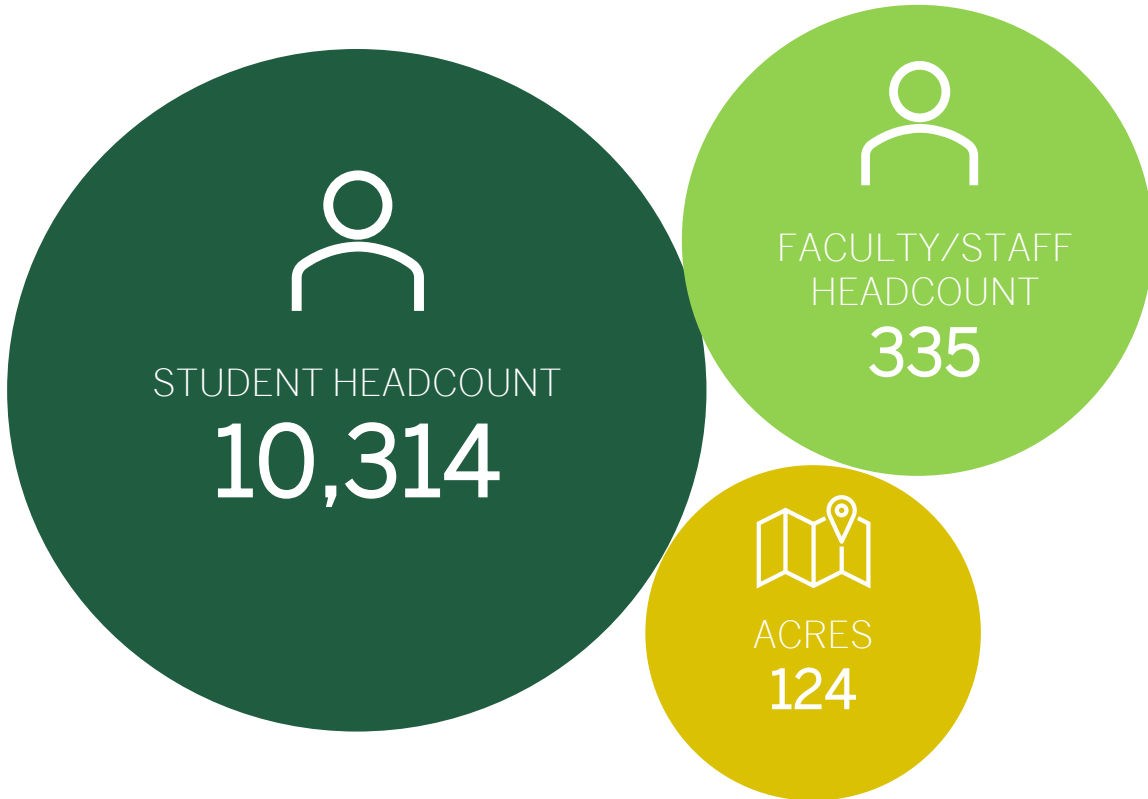
# POPULATION DENSITY

San Mateo County grew by 6.44% since 2010 and is projected to continue growing.



Source: American Community Survey 1-Year Estimate, 2010-2019

# CAÑADA COLLEGE SNAPSHOT



# LAND USE

Cañada is located among low-scale residential properties and near large open spaces and nature preserves.

- Single-Family Residential
- Institutional/Public Facilities
- Open Space

# TRANSIT

Cañada is served by a SamTrans bus line that connects the campus to the Redwood City Transit Center and CalTrain.

- SamTrans Bus 278
- ☼ SamTrans Bus Stop
- Bike Route

To Redwood City Transit Center

Source: SamTrans; Town of Woodside General Plan

# TRANSIT

26% of students ride SamTrans to campus.

The campus shuttle is currently suspended due to COVID-19.

Trip length is the primary reason students do not utilize transit.

-  Bus/Redi Wheels Stop
-  Shuttle Route



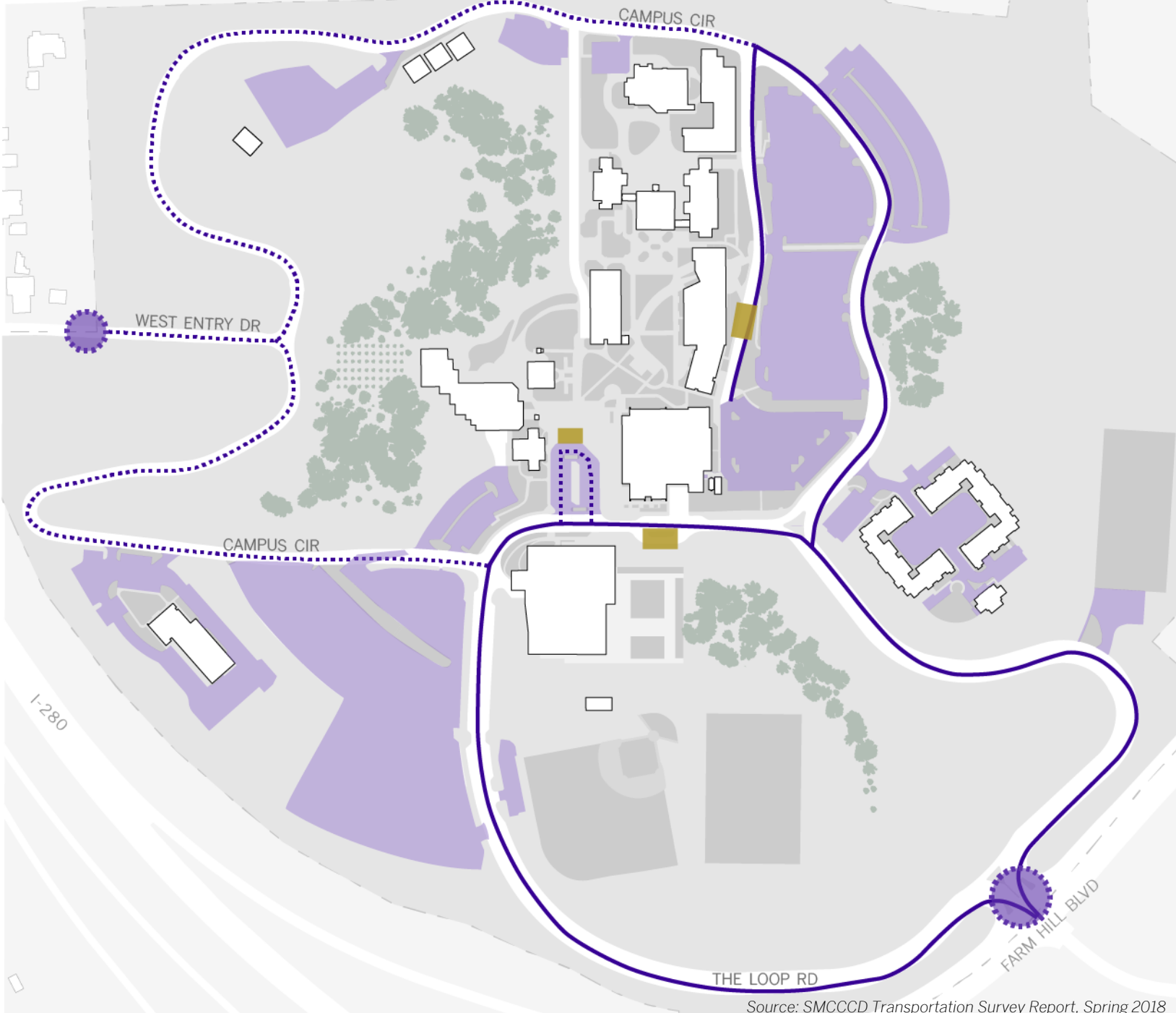
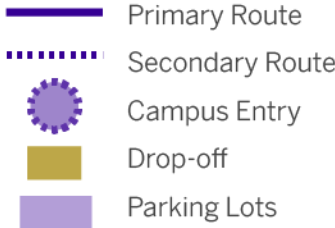
Source: SMCCCD Transportation Survey Report, Spring 2018

# VEHICULAR CIRCULATION

Most students and staff access the campus by automobile.

- 60% drive alone
- 24% are dropped off
- 15% use rideshare
- 5% carpool\*

\* Survey respondents were invited to select all applicable responses



Source: SMCCCD Transportation Survey Report, Spring 2018

# COMMUNITY USE

The Health and Wellness Building, Theater, Observatory, Athletic Fields, and campus grounds are open to the wider community as well as students.



# STUDENT HOUSING

Housing affordability is a key issue countywide. Students reported it is difficult to find housing close to the District's campuses.

**The District is exploring options to create below market-rate housing to support students.** Part-time students expressed interest in enrolling full-time if housing were available.

*Right:*  
Cañada Vista  
Staff Housing





# SURVEY

---

03

# COMMUNITY SURVEY

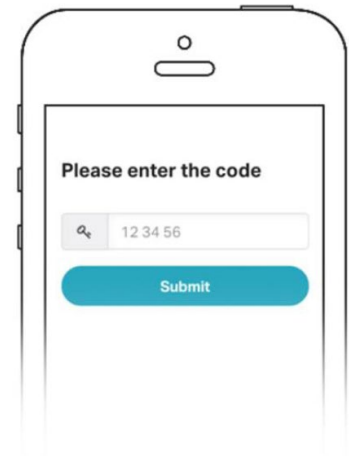
Go to [www.menti.com](http://www.menti.com) and use the code **29 14 84 1**



Grab your phone or computer

[www.menti.com](http://www.menti.com) |

Go to [menti.com](http://menti.com)



Enter the code **29 14 84 1** and vote!